

# outlook

YOUR VIEW INTO NORTHERN MICHIGAN LANDSCAPES

VOLUME 1

## ON THE COVER

Michigan Nursery & Landscape Assoc.  
AWARD WINNER

### LANDSCAPE LOOKBOOK

Inspiring outdoor patios, kitchens,  
fire pits, walkways and more

YOUR LIFESTYLE,  
YOUR FIRE PIT

BROUGHT TO YOU BY

 **manthei**  
supply



Welcome to the premier issue of Outlook magazine.

Outlook is born out of a desire for connection with the people we love, and the moments that we create when we put aside life's distractions and enjoy some time together in the beauty of the outdoors.

Outlook represents the daydreams of the families of Manthei Supply. By day, we're a landscape design center and stone yard with deep roots in Northern Michigan. Our 6,000 square foot showroom, just south of Charlevoix, is a Willy Wonka factory of colors and textures where your imagination can run wild as you're designing your perfect patio, garden or outdoor kitchen. And our four-acre stone yard is the largest of its kind in the north.

But on nights and weekends, we're mothers, fathers, and neighbors. We host dinner parties on backyard patios. We gather for sunsets around a fire pit. And we take a dip in the lake every chance we get.

Thank you for being a part of the journey. We hope that in some small way, Outlook inspires you to live your best life with the people you love the most.

Sincerely,

*The Manthei Supply Team*

16188 Heise Road  
Charlevoix, MI 49720  
231-547-6595  
sales@mantheisupply.com

## our team



Bill Rowden  
Sales Director



Dave Holmes  
Operations Manager



Marvin Verwys  
Sales



Christian Kirkby  
Sales



# outlook contents

- 4 **Landscape Lookbook**  
Inspiring outdoor patios, kitchens, fire pits, walkways and more
- 23 **A Project Aligned Just Right**  
On the cover: MNLA 2022 Industry Award Winner
- 37 **Your Lifestyle, Your Fire Pit**
- 44 **The Strawberry Story**  
How the Manthei Group began
- 46 **Manthei Family Recipes**  
Strawberries for dessert, strawberries for breakfast
- 50 **Let's Walk You Through It**  
A guide to natural stone
- 56 **Set A Tone**  
Natural stone color options
- 58 **Our Picks**  
Landscape products you'll love

# Drost

*does move*

Design & Build  
Landscape Services  
Tree Service

Create the ultimate summer getaway  
in your own backyard.

[www.drostlandscape.com](http://www.drostlandscape.com)

(231) 348-2624



## THE GREAT LAKES *Await*



RIVIERA  
LUXURY MOTOR YACHTS



FOUR WINNS

Whether you're in the mood to cruise  
the Great Lakes or inland lakes, Lake  
Michigan Yacht Sales has you covered.

Offering 6 boat lines and facilities in  
Onkama, Bay Harbor and Manistee, LMYS  
has vessels to meet all of your boating needs.  
[www.lakemichiganyachtsales.com](http://www.lakemichiganyachtsales.com)



Lake Michigan  
Yacht Sales

801 Front Street Suite B, Bay Harbor, Michigan 49770 - 231.439.2675



COASTAL  
—CONSTRUCTION—

EXPECT EXCEPTIONAL

contact us

(231) 350-3578

[www.coastalnomi.com](http://www.coastalnomi.com)

# landscape lookbook



## MAKE A GRAND ENTRANCE

First impressions are lasting impressions. Bring the wow-factor to your home with thoughtfully selected plants, lighting and stone materials. Massive limestone outcroppings and quarried step treads make a bold

statement on the walk up to this beautiful home. And they're the perfect compliment to the creamy highlights of the home's stylish ledgerstone veneer.

The entrance of this established colonial-inspired home has been reimagined as a gathering spot for friends and family alike. This stately patio employs Sahara travertine pavers and a natural gas fire feature seamlessly incorporated into the property's mature vegetation.



A covered porch is the perfect place to share coffee and conversation with friends and neighbors. This modern take on the classic porch incorporates the clean lines and dark colors of Basalt stone pavers, for styling that blends perfectly with the aesthetic of this contemporary home.

# ENJOY LAKE LIFE

You've got the view, or has it got you? This breathtaking lakeside bluff has been crowned with an intimate patio space that brings the best of everything into full view. HIGH FORMAT® Grand Flagstone, Irregular Steps and a Belvedere® Fire Pit enhance the rustic surroundings. You bring the marshmallows, the sunset brings the show.



Scale is as important as color or shape. This expansive lake view is enhanced by the use of large-format Mid-Century slabs from HIGH FORMAT®. These epic ultra-durable slabs are smooth enough for bare feet, but textured enough for slip resistance when wet. The colors and shapes aren't bad on the eyes either.



Shoreline protection doesn't have to be boring. This exciting lakeshore makes smart use of giant limestone outcroppings, separated by a contemporary flight of lightly textured Onyx granite steps.



Where rising and falling water levels are a reality, HIGH FORMAT® Outcropping walls are an excellent and beautiful barrier between lake and yard.

# FIGURE OUT YOUR VERTICAL

Life happens in three dimensions. A backyard on a hill doesn't mean that you can't live your best life outdoors. When you add retaining walls to your vertical spaces, you open up a world of possibilities for patio life. And who knew that something so beautiful could be so functional?

This recessed patio shows a masterful use of combining natural and man-made materials together. Can you tell which is which? Precision-sawn limestone steps provide a steady walk below, revealing a stunning splitface dry-stacked stone wall, and a patio crafted from HIGH FORMAT® Gauge Select slabs. These ultra-high performance flag-stone slabs have a natural-cleft stone texture and a salt-proof surface.

Raised planting beds are a great way to create separation between elevations. These HIGH FORMAT Kodah® retaining walls with natural-looking limestone textures and linear proportions compliment both classic and contemporary environs.



When tall retaining walls require an engineered solution, HIGH FORMAT® Outcropping walls are the perfect option. They provide the authentic look of weathered limestone and can be designed to reach nearly any height.



## CREATE A CALMING PLACE

Suburban life doesn't mean compromising the intimacy of the outdoors. This calming backyard oasis blurs the line between in and out. The covered porch cleverly mirrors the living room, creating an intimate gathering place where you can feel the cool breeze on your neck, and hear the soft flutter of hummingbird wings. The patio, crafted with stylish and durable HIGH FORMAT® Mid-Century flagstone slabs, becomes a natural extension of the home.

Covered patios provide a much needed reprieve from the hot sun and extend the outdoor season well into the fall and winter. Silverek travertine pavers not only provide a level walking surface that is a joy on bare feet, they are durable enough for our northern climate in covered and uncovered patio applications.



Grand patios are incredible for entertaining, but never underestimate the value of smaller, intimate spaces. In this thoughtfully designed corner of the yard, HIGH FORMAT® Grand Flagstone slabs create the perfect nook to enjoy morning coffee for one or two.



# CHOOSE A PATH

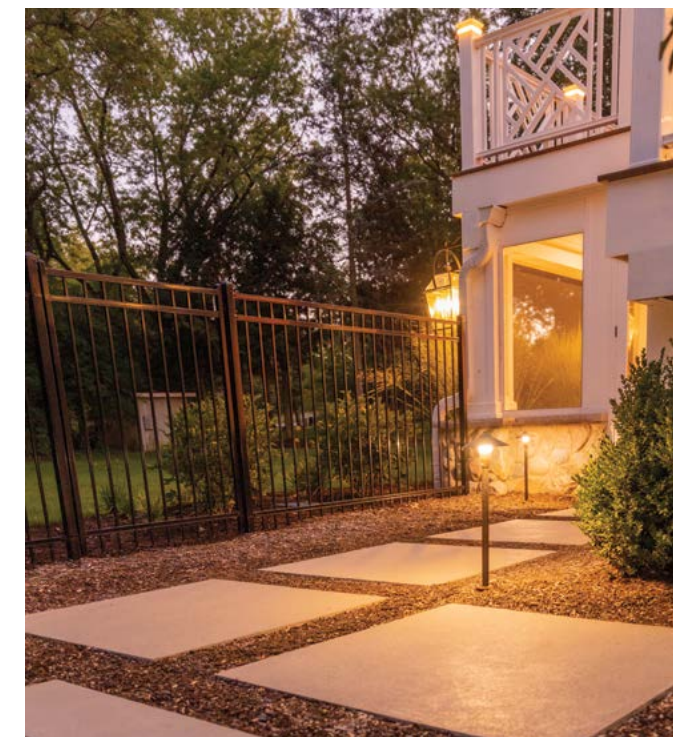
You've built the dream destination, but don't forget to enjoy the journey. Fond du Lac flagstone and limestone steps create naturally beautiful pathways from home to lakeshore, with an extended stop at the patio for s'mores and a show-stopping sunset. Learn more about this project on page 23.



Northern Michigan bliss is waiting at the end of this Silverk travertine paver walkway.



Onyx granite stepping stones meander naturally through the landscape.



Clean, modern paths are defined with HIGH FORMAT® Montrose slabs.

EAT AND  
BE HAPPY

Whether your passion for grilling is casual or serious, the modern styling of this Unilock U-Cara Smooth grill island adds sophistication to your backyard. And, the accent lighting means you can entertain whenever the opportunity arises.

Photo courtesy of Unilock®



Extend your dinner party late into the evening hours. This intimate fire table means never having to cut the evening short when the air turns cold.



A well-designed pergola is a stylish way to diffuse sunlight. It perfectly frames your social hot spot when the sun goes down. This outdoor bar and grill is brought to you courtesy of HIGH FORMAT Belvedere® walls.

# GET TOASTY **WARM**

Everyone is drawn to a cozy fire, and this one is ready to entertain. This custom tuxedo-style, fireplace surround features Unilock U-Cara® Smooth walls with Arcana™ and Mattoni™

pavers, and all the special touches including a see-through gas insert and big screen for movie and game nights.



If you only create one gathering space in your backyard, a circular patio and fire pit is the most versatile combination. In this cozy corner, Fossil travertine pavers are beautifully framed with large limestone outcroppings and well-placed landscape plantings.



Consider what is most important to your family with customized details. LedgeStone coping and a gas burner have been added to this Unilock Brussels Dimensional™ fire pit. The “final touch”, a glass flame guard protects the flame from high winds.



## DRIVE UP IN STYLE

Your home is beautiful. Your landscape is lush. The drive up can be just as extraordinary. Driveway pavers are a beautiful and durable alternative to the typical asphalt and concrete monoliths that line our city streets. In this show-stopping approach, Unilock's Courtstone® paver brings the elegance and durability of cobblestones with the modern reliability of a paver.

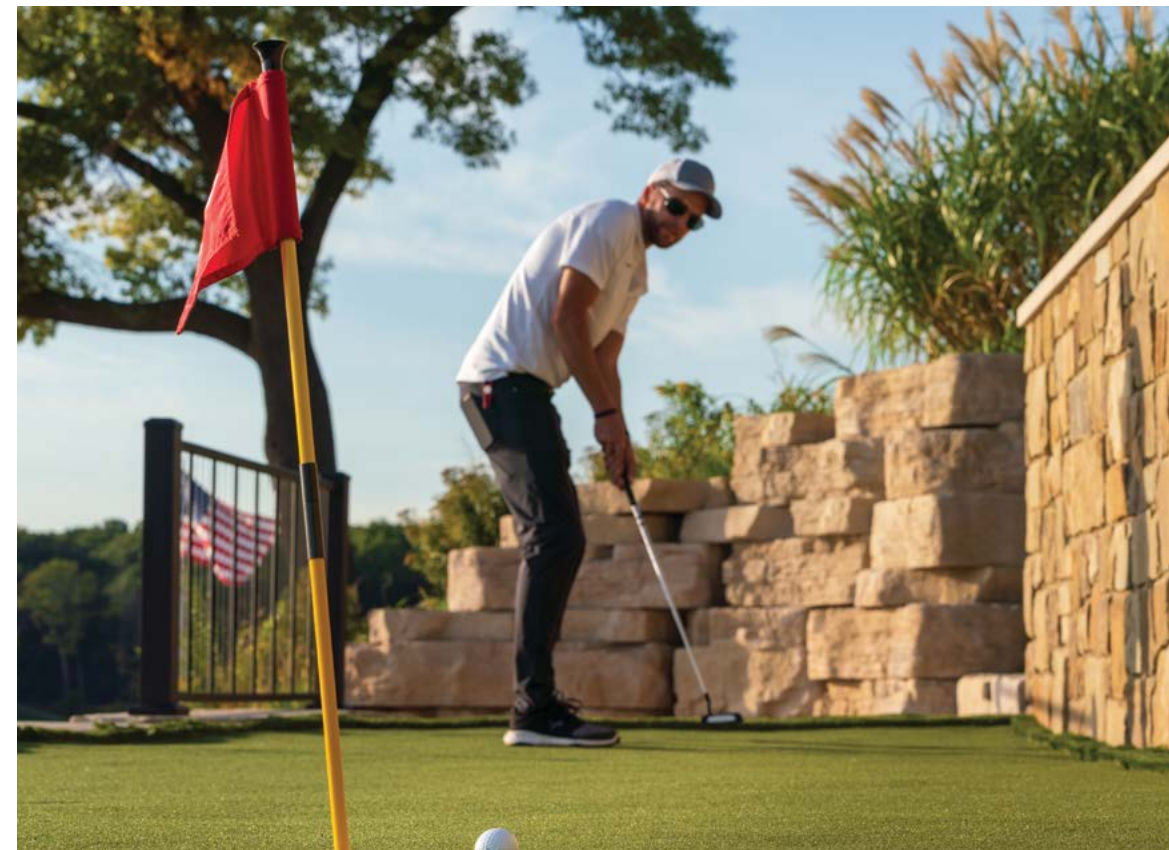
## MAKE IT YOUR OWN

You can't call it home, unless you make it your own. Bring out your true character and add what you love!

Of course you love bocce ball! This custom bocce court is framed with HIGH FORMAT Kodah® walls. The linear proportions and limestone textures are a perfect match for the HIGH FORMAT® Outcropping walls that retain the patio above, and Superior Stepping Stones below.



Why not work on your short game in the comfort of your own backyard? For the golf lovers, HIGH FORMAT® Outcropping walls are a natural backdrop when you need to carve out your own little piece of the links.



FOR THE  
GREENER  
GOOD



We are  
Michigan's  
Green Industry  
professionals

Growing, planting,  
maintaining,  
designing &  
supplying right in  
your backyard.



SCAN TO LEARN MORE  
ABOUT OUR INDUSTRY &  
AVAILABLE CAREER  
OPPORTUNITIES

forthegreenergoodmi.com  
@greenergoodmi



For The Greener Good & forthegreenergoodmi.com  
are brought to you in partnership with MNLA,  
advocating for and advancing Michigan's Green  
Industry for over 100 years!

BEARDS  
BREWERY



NORTH



OF



NORMAL



BEARDS BREWERY / 215 E. LAKE ST. / PETOSKEY, MI / BEARDSBREWERY.COM /

LINCOLN  
LANDSCAPES

*We create the spaces.  
You create the memories.*

LANDSCAPE DESIGN & BUILD  
SERVING NORTHERN MICHIGAN

231-499-5436 ■ lincolnlandscapes97@gmail.com  
Fully Insured ■ Certified Green Industry Professional





# a project aligned just right

**On The Cover**

**Twin Bay Landscaping**

MNLA 2022 Industry Award Winner

**Author: Carissa Mullaney**  
Marketing Director, Manthei Supply

Every year at the end of summer, the Manthei Supply team is on a mission to photograph exceptional landscape projects completed by members of our very own landscape community. And I can tell you that we will push the season to the limits capturing these beautiful projects, all the way up until the leaves fall on the ground.

On one particular 2021 day, we were scheduled for a photo shoot a few hours away. I remember the clouds filled the sky, and it was raining all morning long. We were closely monitoring our weather app (as we typically do for photo shoots) and saw a glimmer of hope, a potential weather break. We took off in the car and headed to what has now been recognized as a 2022 Michigan Nursery and Landscaping Association (MNLA) Industry Award winning project, situated on Lake Michigan.

"It just kind of goes back to wanting to respect what was there and just tie it all in, make it look like it could have happened naturally."



When we initially arrived, gusts of wind were coming off the lakefront and the patio was drenched in water. The rain appeared to be changing to drizzle, but we were certainly questioning whether we would be able to take any usable photographs. Needless to say, we went to work immediately drying off the stone before our photographer would arrive. Luckily enough, the storm fully parted, and we were able to get our preparations completed just in time for what I would describe as “a perfect shoot”. The stars just aligned on this magical day, and the photos are here to prove it.

Fast forward to today. I finally had the opportunity to sit down with project manager and business owner, Jeff Elshoff of Twin Bay Landscaping, to learn about the design process and landscaping decisions that were made along the way for this Northern Michigan residence.

As I listened to the twists and turns of the design and build stages, including last minute changes and pleasant surprises, I sensed a sincere excitement from Jeff about how it all came together. This is something I could relate to given my own experience visiting the site.



Before: Shoreline



Before: Patio & View

**The Project Goals**

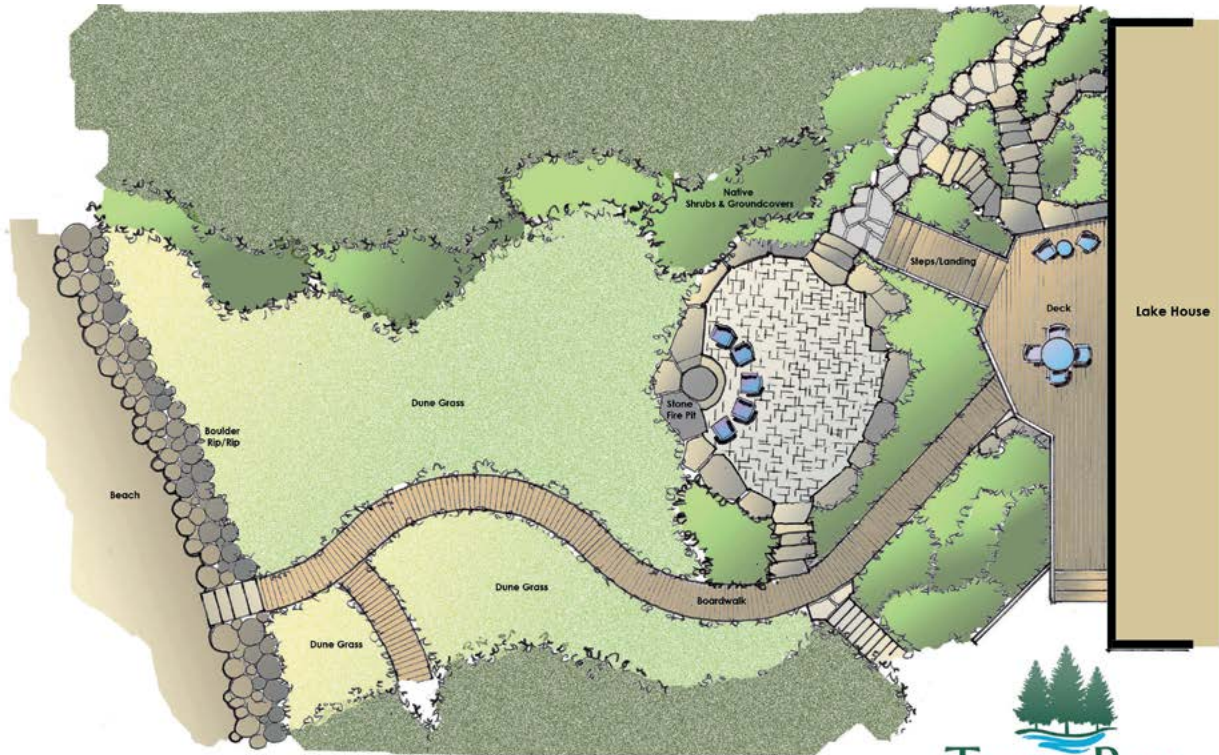
As with any project, there were a set of goals and objectives established with the homeowners.

First and foremost, when Jeff received an initial call from the client, they were experiencing extremely high waters. Therefore, the main objective was protecting the bluff that they currently had. At the same time, they wanted to maintain the feel of a natural environment and shoreline.

The second goal was improving accessibility on the site. The residence included multi-generational family members, and mobility was of particular concern. “They actually had a six foot ladder that you couldn’t even see the top of (from the house) that they had to climb over to get down to the beach.”

Better access to the beach, went hand-in-hand with another criteria: increased visibility. The homeowners wanted to be able to see their children playing outside along the waterfront. This was particularly a safety concern.

Lastly, they wanted to create a centralized fire pit area where everyone could congregate around and spend time.



Design Concept Drawing



**The Process**

With a designer and architect on staff, Twin Bay got to work initiating design studies and maximizing the budget with the homeowner. After a handful of renditions, they landed on a design that would maintain the existing patio footprint and infrastructure, while protecting the shoreline and enhancing the natural environment.

When I asked about challenges they faced along the way, “Ahhh, permitting was definitely a big one out there. You know, it was on Lake Michigan. Everybody was applying for permits at that point; so it was a really slow process”, Jeff explains.

The work around? They completed the project in a different order than they would ideally approach it. Even though the team was waiting on permits for the shoreline, they began work on areas immediately surrounding the home instead. This meant also changing access to the shoreline for when they would be able to complete that portion of the project.

Another obstacle had to do with materials. This was not a new home and existing natural stone was already on the site. However, they discovered that the quarry where the stone had come from was now closed. They didn’t want the design to look like an afterthought, and desired the right blend of stones to

compliment the exterior of the home and natural surroundings. Working closely with the homeowner, they looked at multiple options in both precast and natural stone, and finally settled on an irregular Fond du Lac slab for the patio.

However, this plan didn’t come to fruition. When it finally came time to order the stone, they ran into challenges. The supply chain for irregular Fond du Lac was disrupted. This was during Covid-19; and they struggled to get the quality product they desired. They had enough to complete a walkway, but it was back to the drawing board for the patio surface. But because the homeowners had gone through the material selection process once before, the second time around proved to be easier.

Was it a blessing in disguise? I believe so. They were able to procure travertine pavers from Manthei Supply in a rich color blend of taupes and browns. The antiqued finish and tumbled edges portray an aged or weathered look complimentary to the rugged sandy shore. But most importantly, it goes back to their goal of improved mobility. The consistent thickness of the pavers and the tight joints between each stone provide a more level surface for walking on than the irregular Fond du Lac slabs would have. Ultimately, these French pattern pavers would provide better foot stability and help achieve one of their important goals.



#### Custom Details and Function

Quality craftsmanship and thoughtful details are what makes this project so special, and you can discover quite a few of these details as you walk throughout the site.

The custom gas fire pit design was unlike any other that Jeff's team had worked on before, and the entire patio design was based on it. "We ended up getting two really large outcroppings that had a natural curved-like form on either side. From that we were able to build the fire pit within those pieces."

He further explains they incorporated a blend of three additional stones to finish out the circle. It was a slow process to get just right. There was a lot of care in the cutting and grinding, particularly with providing proper ventilation. They constructed vents directly within the stone, in lieu of having a large metal grate that would stand out and appear out of place. A hidden drain was also added underneath the outcroppings, beside the fire pit. This was done to prevent water from pooling on the patio.

Along the journey, the team continued to generate unique solutions that would improve the project, and the handrails are an attestation to this. With every storm, different pieces of driftwood would come to shore. They were able to collect ones that worked for the handrail and other details. "It just kind of goes back to wanting to respect what was there and just tie it all in, make it look like it could have happened naturally," says Jeff.

The pathway design was also updated as they were working in the field and these changes were based on functionality. "We were going up and down the stairs near the house and realized we were cutting it off to the right and the left a little bit, so we chose to split that staircase knowing how much more user friendly it was going to be. The homeowners are going to be using it the same way we were working on the project."

"We ended up getting two really large outcroppings that had a natural curved-like form on either side. From that we were able to build the fire pit within those pieces."





## Make the most of outdoor living

Landscape Design, Construction, & Installation



Twin Bay Landscaping

info@twinbaylandscaping.com | 231.649.4480



Before: Pathway and Patio

### Protection and Prevention

Getting back to the first phone call Jeff had with the client, preventing erosion and protecting the shoreline was the foremost concern. After working on the patio area and obtaining the necessary permit, Twin Bay was now able to provide the infrastructure needed along the lakefront.

A new development had occurred though. After realizing the potential for a view from the downstairs basement all the way out to the shore, they wanted to protect that sightline. They chose to open up the hill that the patio was on and create a gradual slope down. If you are wondering about the ladder, it no longer exists. A moderate staircase now provides access down to the beach.

Riprap was installed for shoreline protection with fieldstone boulders that were anywhere from two to five feet. "There's probably seven feet worth of stone there. Right now you can only see a foot to six inches of it just because the water levels have gone back down and the sand blows around and covers it all up," says Jeff.

Native plantings that would naturally exist in the area, such as dune grass, were placed along the shoreline. "It helps catch all the sand that blows around in the wind." Closer to the house they incorporated Junipers, an evergreen known for low maintenance. And the decision to work within the existing patio footprint was in part due to the well established English Ivy along the perimeter. Not only did it already look nice and full, it can help control erosion. The front of the home is where you see a more traditional floral garden, as it is shielded from lakeshore wind.



Before: Patio Hill



#### Reflecting Back

Twin Bay Landscaping continues to maintain the property and enjoys their working relationship with the client. "The homeowners were an absolute delight to work with. They weren't living here (during construction) and as the project went on, they definitely got more comfortable with us. It was exciting to see their reaction when they would come and we had gotten a big chunk of the work done."

Overall, I think it's rare that someone says they wouldn't change a thing after working so closely on a project, but that's what Jeff says, "It was really just a fun project from start to finish. And yeah, we love how it turned out."

Congratulations to the Twin Bay Landscaping team on their award winning project!

#### Additional Credits

Bayshore Oil and Propane (Gas Line)  
 Spinniken Lawn & Irrigation (Irrigation)  
 Jacqueline Southby Photography (Photographer)

"(Dune grass) helps catch all the sand that blows around in the wind."






**CUSTOM ENGINEERED STONE SHORELINES AND RETAINING WALLS**

BUILT WITH INTEGRITY, BUILT TO LAST,  
**BUILT TO LOOK GOOD.**

**231-838-8663**






**WRIGHTSCAPES**  
 wrightscapesmi.com  
 231-838-3863

**We Get It Right**



**DESIGN AND BUILD LANDSCAPE FIRM**



Available at  
**manthei**  
supply  
Charlevoix

**WALLS**  
**SLABS**  
**PAVERS**  
**FIRE PIT**  
**STEPS**  
**COPING**  
**CAPS**

Great looking, easy to work with and durable concrete landscape products



HIGHFORMAT.COM



AT MANTHEI SUPPLY



Kodah® Wall & Camden Coping



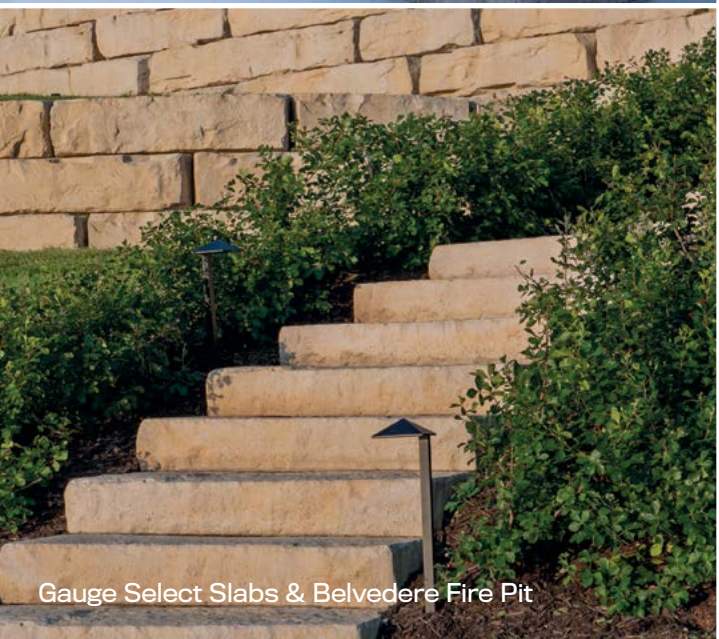
Superior Steppers



Outcropping Wall & Empire Steps



Irregular Steps



Gauge Select Slabs & Belvedere Fire Pit



Montrose Slabs



Available at  
**manthei**  
supply  
Charlevoix

**FIND YOUR STYLE**  
CONTEMPORARY HISTORICAL TRADITIONAL GEOMETRIC

**UNILOCK®**

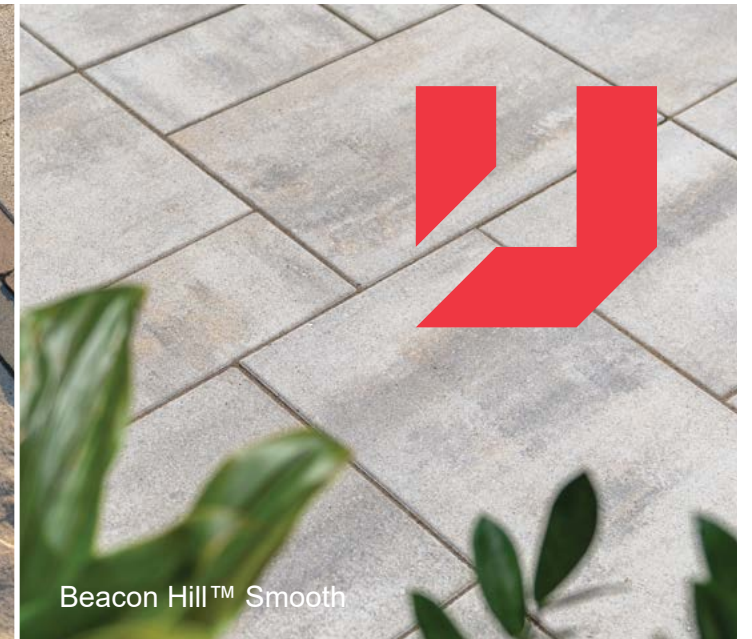
**HIGH QUALITY  
PAVERS AND SLABS**

[unilock.com](http://unilock.com)

AT MANTHEI SUPPLY



Beacon Hill™ Flagstone



Beacon Hill™ Smooth



Brussels Block



Copthorne®



Westport™



Holland Premier™



www.beldenbrick.com | 330-456-0031 | The Standard of Comparison Since 1885

## RESHAPING THE IDEA OF LANDSCAPE DESIGN

The Belden Brick Company is excited to bring you the evolution of clay pavers with our unmistakable hardscape products. Discover our many colors, sizes, textures, and shapes at [www.beldenbrick.com](http://www.beldenbrick.com)

COMMERCIAL | RESIDENTIAL | PAVING

**BELDEN**  
CLAY PAVERS  
AT MANTHEI SUPPLY



Carbon Black



Pebblebrook Plank



Belcrest 760



Author: Bob Conklin  
Product Support & Development, HIGH FORMAT®

Each of us has our own vision of what our backyard is for and how it fuels our rest. The backyard is a slate of expression for how we live when we take the time to live. It's the yang to the yin of our hard work. For some of us, the backyard includes a patio or a deck. For some of us, the backyard includes lush gardens to help us enjoy the beauty of creation, or to grow our own food. For some of us, the backyard will include kitchens, swing sets, or swimming pools. But there's one element that's essential for every backyard: the fire pit.

Fire pits are the crown jewel of any backyard. The fire pit is where we gather with friends after a bar-

beque. It's where we keep warm outdoors in the fall and winter. It's where we roast marshmallows and create the most decadent s'mores with our children and grandchildren. And on its own, the fire pit is a sensory wonderland: the beautiful colors of dancing flames, the comforting sounds of crackling wood, the smells of wafting smoke, and warmth on chilly evenings or late nights.

So how do we choose the perfect fire pit to go with our home? On one hand, the fire pit is simple: gather some stones or blocks around a liner, stack some wood and kindling, and light it. We made fire! But fire pits have actually come a long way in recent

years. As lifestyles and technologies have changed, so have fire pits. The wood burning fire pit is a classic that's never going away. But today we also have the option of fire pits that burn natural gas or liquid propane. Some of them are operated by remote control. And we even have wood-burning fire pits that don't smoke!

Of course we have the classic wood-burning fire pit. This is the fire pit that we all know and love. They can be made from boulders and masonry. But we're going to focus on precast kits. Kits are a great option, because they include everything that you need to build your own fire pit with tools that you already have, usually in less

than an afternoon. They're guaranteed to look great, and there are lots of options for shapes, textures and colors. You can match the perfect to the style of your home.

Round fire pits are a timeless shape. They're great because everyone who gathers around one can be the same distance from the flame. With a generous diameter of nearly five feet, the HIGH FORMAT Belvedere® fire pit is a fantastic option for families and larger gathering spaces. The blocks have the beautiful texture of weathered limestone, but they're actually made of durable wetcast concrete. The kit comes with a heavy-duty steel liner to refract the most warmth and to protect the stones. And, it comes in three beautiful colors.

Rectilinear fire pits have gained popularity as modern design styles have come back into

fashion. Square shapes are the perfect accent for any home with linear design elements, and they give off as much heat as their curvilinear brethren. The HIGH FORMAT Kodah® fire pit makes a bold statement, with a footprint of more than four feet, a snapped limestone texture, and a heavy-duty steel liner. It has a generous ledge for drinks or to kick up your feet. They are also available in the same beautiful color blends as the Belvedere® kit.

Probably the most amazing development in fire pit tech has been the invention of the smokeless liner. We've all experienced the phenomenon of having smoke follow us around the fire pit, regardless of where we try to sit. Drop-in smokeless systems from Breeo® can replace the liner in any HIGH FORMAT® fire pit. These genius fire pit liners are dou-

ble-walled, and recirculate air and gas back into the fire, creating a secondary combustion that burns off remaining smoke. Breeo® also makes a number of self-contained steel fire pits that come fully assembled, and can go almost anywhere.



HIGH FORMAT® Dimensional Fire Pit with Breeo® Smokeless Liner



HIGH FORMAT Belvedere® Fire Pit

*Jack Barnwell*  
DESIGN  
LANDSCAPE ARCHITECTURE  
*Award Winning*

From brand-new creations to heirloom enhancements of timeless landscapes, Jack Barnwell and his team are now offering Design, Consulting, and Project Management for Northern Michigan and beyond.

**Contact Us**

[www.jackbarnwelldesign.com](http://www.jackbarnwelldesign.com)  
[jack@jackbarnwelldesign.com](mailto:jack@jackbarnwelldesign.com)  
Traverse City, MI Based

HIGH FORMAT Kodah®  
Fire Pit with gas insert



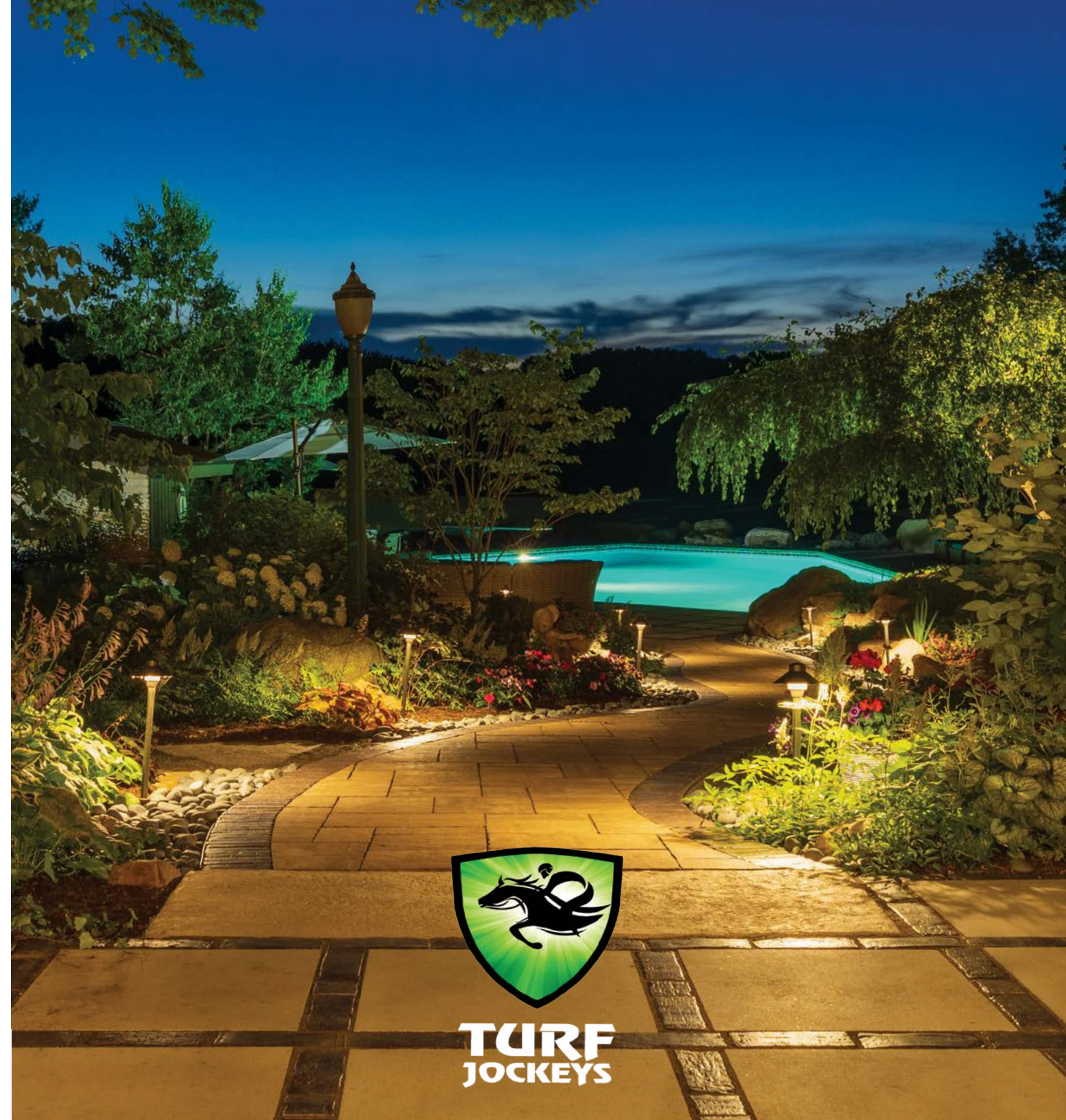
We all love the sounds and smells of a wood fire. But sometimes we live in municipalities that don't allow us to burn wood; and a wood fire can be a lot of work too. Sometimes it's nice to be able to light a match or flip a switch and have instant fire. In those cases, having a gas-burning fire pit is a God-send. Gas fire pits can burn natural gas or liquid propane. They can be as simple as a match-lit system with a key valve. Or they can be state-of-the-art systems with electronic ignitions. Gas fire pits can even be operated with

remote controls and phone apps! And when you're done with the fire, you just turn it off. You never have to worry about smoldering ash or waiting for a fire to die out.

Gas-burning setups are available for all of the HIGH FORMAT® fire pit kits. But there are lots of other options for gas as well. The flexibility and safety of a gas system allows for all kinds of different shapes and sizes. Some of them can even go on your wood deck. Modern looking bowls and tables are just a few of the endless possibilities. You can even dream

up your own custom fire pits or tables, and there is a burner to fit your wildest ideas.

At the end of the day, every home calls for a fire pit. It's the cornerstone of your yard. It's the main event at all backyard gatherings. It's where friends, family and neighbors gather to create new memories and to recall old ones. Whether you burn wood or gas, there's no wrong way to fire pit. For the love of s'mores, to keep warm, or simply to extend the evening: be sure to make time to spend around the fire.



**TURF  
JOCKEYS**

Designing and Building Inspiring Environments For Over 25 Years

turfjockeys.com



**TOGETHER, WE WILL CREATE YOUR OASIS**

*An Award Winning Landscape Company*

**866.613.4145 | turfjockeys.com**





**DAVID  
HOFFMAN**  
LANDSCAPING & NURSERY INC.

2614 N US HWY 31  
PETOSKEY, MI 49770  
(231) 348-3772  
(231) 347-2298 FAX  
dhland725@gmail.com

*Exceptional Real Estate.  
Extraordinary Service.*

**Warmer weather means selling season is right around the corner!**  
Setting your home up for success is an integral step in the selling process. There are several ways you can gain the highest value for your luxury home, and we would love to share them with you so your home is ready for the market. When the time is right, reach out to our experienced real estate team to sell your luxury home.

**Call us at 231-487-6404 for your complimentary,  
no-obligation home presentation checklist.**



104 Lake Street • Boyne City, Michigan 49712 | [jamiewoodall.com](http://jamiewoodall.com) |     

©2022 BHH Affiliates, LLC. An independently owned and operated franchisee of BHH Affiliates, LLC. Berkshire Hathaway HomeServices and the Berkshire Hathaway HomeServices symbol are registered service marks of Columbia Insurance Company, a Berkshire Hathaway affiliate. Equal Housing Opportunity. If your home is currently listed with a broker, please disregard this offer.





**Peak**  
MASONRY & CONCRETE  
231-330-2385



**STONWORK SPECIALIST: FLAGSTONE, FIREPLACES, PATIOS, AND MORE**



Ted & Ernie Manthei, 1920s-1930s  
(Gen 1 of The Manthei Group)



# the strawberry story

How The Manthei Group Began

*Brothers, Ted & Ernie Manthei are lovingly referred to as Gen 1 of the Manthei Group family businesses. This is their story.*

**Author: Ruth Manthei Wilkey**  
(Youngest Gen 2 Manthei)

**A**fter Ted Manthei completed his eight grades of education, he moved out of the family house and lived in a small shack he had built with his business partner, Johnny Kopenkosky. They had purchased a 40-acre section in the neighborhood for farming. One evening he took a short-cut through the Edgerton farm on his walk home for dinner with the family. Ted couldn't resist sampling those bright red strawberries. They were the most delicious flavorful berries he had ever tasted! He just couldn't resist them and, pretty soon, he found himself sneaking over there to steal more berries. Eventually, his conscience caught up with him and he struck a deal with Edgerton to buy the whole crop! He also bought some complete plants.

The varieties were Fancy Fairfax and Dorsett. They were advertised as the most delicious strawberry ever grown and showed great promise for farming profits. However, although they were truly delicious, they didn't live up to the marketing promotions. In fact, in time they were listed as "unsuitable

for commercial production." The plants grew gloriously but they produced only a few nubbins. Ted and Ernie watched the Edgertons lose their farm because of failed attempts at berry production.

Despite that, Ted wanted to try his hand at it. He worked with the Emmet County Agricultural Extension program of Michigan State University and learned what nutrients the berries required to thrive and how to balance the soil. He read about the nutritional value of marl from the bottom of the lake. He also learned that berries need lots of water. By this time, Ted's brother Ernie was out of school and partnered with Ted. Ernie worked with Professor Roby to engineer a water cannon for irrigation. They installed a pump by the lake and laid pipes across the fields. They pumped that nutrient-dense water out of the lake and covered acres of berry fields with fresh lake water every day.

Wonder of wonders and miracle of miracles... those delicious berries grew to an enormous size and quantity!

Eventually, they grew so many berries that they had trouble finding enough crates to ship them to market. That's when they decided to produce their own crates. But in the process, they mistakenly bought equipment for making wood veneer. They had never heard of veneer! They thought they were going to make crates! But that "mistake" became "the goose that laid the golden egg."

Not long after that, the berries developed a disease. Then WWII broke out and it was hard to find enough pickers. But by that time, they were already heading into the veneer industry.

Ernie always said, "It wasn't our smarts that got us to where we are. Man thinks and the Lord leads. To Him be all the glory!" God turned their "mistake" into something beyond their imagining.



And so, the Manthei family transitioned from agriculture into industry. They went from being the poorest family in the neighborhood to hiring the neighbors and providing an income for many families to thrive. Glory to God!

We grew up with lots of strawberry shortcake and egg pancakes with butter, maple syrup and strawberry sauce!

*Recipes located on page 46.*

# manthei family recipes

## Grandma Constance's Strawberry Shortcake

- 2/3 cup shortening
- 1 3/4 cups sugar
- 2 eggs
- 1 1/2 tsp. vanilla
- 2 1/2 cups all purpose flour
- 2 1/2 tsp. baking powder
- 1/2 tsp. salt
- 1 1/4 cups milk

Preheat oven to 375 degrees and lightly grease a 9x13-inch baking pan.

In a large mixing bowl, beat together the shortening and the sugar until fluffy. Beat in the eggs and vanilla.

In a separate bowl, combine the flour, baking powder, and the salt. Add to the shortening mixture and the milk. Mix well.

Spread the batter into the prepared baking pan and bake for 30-35 minutes. Check the doneness with a toothpick. Be careful not to overbake the cake.

Top each slice of cake with a generous spoonful or two of berries and a nice dollop of whipped cream. See below for ingredients and instructions.

## Strawberries and Sauce

- 2 pints of strawberries (washed, hulled, and mashed)
- powdered sugar (to taste)

In a large bowl, combine mashed strawberries with sugar to taste. If your berries are really sweet, then you don't need to add more than a tablespoon or two of sugar. Set it aside to allow the sugar to draw out the juices of the berries.

*Remember that the Manthei strawberries were one of sweetest (if not the sweetest) berries in the State of Michigan. So in today's world they would very much need an ample dose of sugar.*

## Whipped Cream Topping

- 1 1/2 cups heavy whipping cream
- 4 tbsp. powdered sugar
- 1 tsp. vanilla

In a medium sized bowl, whip your cream with powdered sugar and vanilla until it holds its shape and forms soft peaks.

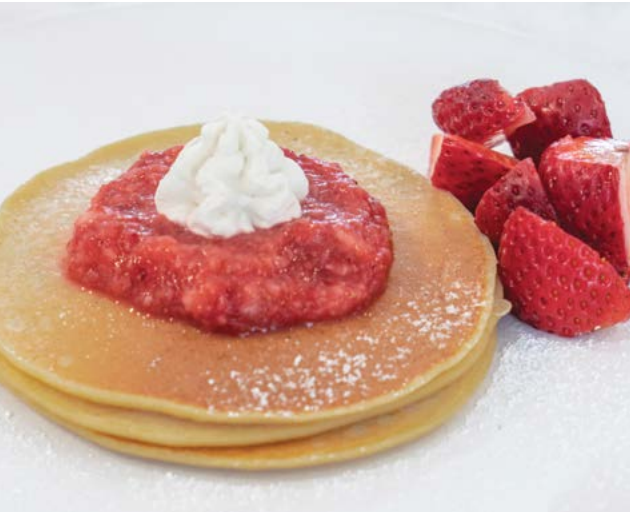


## Egg Pancakes from Cora's Recipe Book

- 4 eggs
- 1 1/4 cups all purpose flour
- 2 cups milk
- 1 tsp. salt

Beat the eggs and add the rest of the ingredients. Mix well. Grease a large frying pan with oil. Pour some of the batter into the pan to cover the bottom. Makes a very thin pancake. Fry for a minute or slightly more. Flip over. Fry for a minute longer.

Serve sprinkled with sugar and cut, or roll up and eat with your fingers.





**manthei construction**

mantheiconstruction.com  
231-547-6595

**building our community**

**COMMERCIAL INFRASTRUCTURE**

SITE DEVELOPMENT  
UNDERGROUND SYSTEMS  
REDI-MIX CONCRETE



**ROBINSON'S**  
LANDSCAPING & NURSERY

**PROFESSIONAL LANDSCAPE DESIGN & CONSTRUCTION**

WWW.ROBINSONSLANDSCAPING.COM PH. (231)582-9484

# Avoiding the Pitfalls: Lakefront Dock Systems

What’s the most important characteristic of a product that claims to be “future proof”? When it comes to lakefront dock systems, you will hear arguments for durability, aesthetics, functionality, and even its ability to handle extreme conditions. These can become traps when you aren’t paying attention to the overall experience. Tradeoffs are made, and you ultimately get a product that excels well in one category but fails in the rest. At Bulmann, we’ve designed not just one, but two dock systems that avoid these pitfalls and give you a dock system you can trust to adapt to your needs.

## The Durability Trap

If you focus on a system that can withstand anything, you sacrifice price, safety, adaptability, modularity, and ease of installation. Most often, people looking for a highly durable system end up leaving it in year-round. To survive the ice, wood or steel pylons are driven into the lakebed. This can be intrusive to the environment, unbelievably expensive, and usually still requires a bubbler that runs to prevent ice formation. The opposite side of the coin is equally daunting. A cheap system could pose safety concerns, can be tedious to install and remove, and may not be reliable.

Bulmann Dock systems don’t have to trade safety, adaptability, and price for durability. Removing and storing the sections on shore for the winter protects them from the crushing power of ice in the spring, ensuring a long-lasting product. Both our Dream Dock and Legacy product lines are crafted as seasonal systems. They are built with light-weight aluminum frames and are maintenance free.

We de-burr sharp edges to protect the end user when installing. The adaptability of options allows us to tailor the features of the product to your lakefront. Kayak racks, solar lights, and bumpers are all accessories that you can choose if you’d like them. If you want them but can’t afford them now, you can always add them down the line.

## The Decking Trap

When you think of dock aesthetics, the most noticeable option is the decking. Choosing a decking often involves more tradeoffs than aesthetics. Wood decking requires heavy maintenance, can splinter, and may not be the look you are going for. Aluminum decking can hold a lot of heat on sunny days, especially depending on the color and thickness of the decking. At Bulmann, we balance looks with functionality to create a blend of usefulness and eye appeal.

Your decking should be safe to walk and stand on. You shouldn’t have to worry about splinters, scorching temperatures, or breaking through your decking. Our colored PVC vinyl tops stay cool to the touch, and the diamond nonskid pattern prevents slipping. We cut the pattern at our shop with round cutters, eliminating sharp edges and making cleaning easier. The pattern leaves an “infinite look” that catches the eye of anyone who comes by it! What’s the tradeoff? Our vinyl PVC decking is exclusive to our Legacy Dock System.

Dream Dock is our opportunity to branch out into new decking types. Our primary option is Sunwalk, which features a vented decking surface. Consumers on high energy lakes can utilize this to reduce the effect of wave action on their dock. It comes in two color options, grey and tan. Our secondary option is a wood like marine-dock board. These also come in both grey and tan. For the 2023 production year, these will be our two decking options, but more may become available in the future.



## The Solution: Modularity

Since we engineer our systems with modularity in mind, we can customize and tailor the result to your lakefront needs. Our dock systems are customized, but not a custom project. You could move to a similar lake in a different state and still be able to utilize the same Bulmann Dock System there. We consider our dock systems to be a long-term investment that can still adapt and adjust to your needs.

If you aren’t using your PWC’s as much as 6 years ago, you can sell them and purchase more patio sections. If your water level lowers the following year, you can repurpose those sections to lengthen your main run. Our goal has always been to bring what the customer wants to life. Over the past 20 years, we have been getting better and better at making that happen.







### LEGACY DOCK

- PVC Vinyl Decking
- Aluminum Frame
- No-Drill Installation
- Stackable Storing
- Infinity Non-Skid Pattern
- Extremely Modular

Accessories



Videos Here

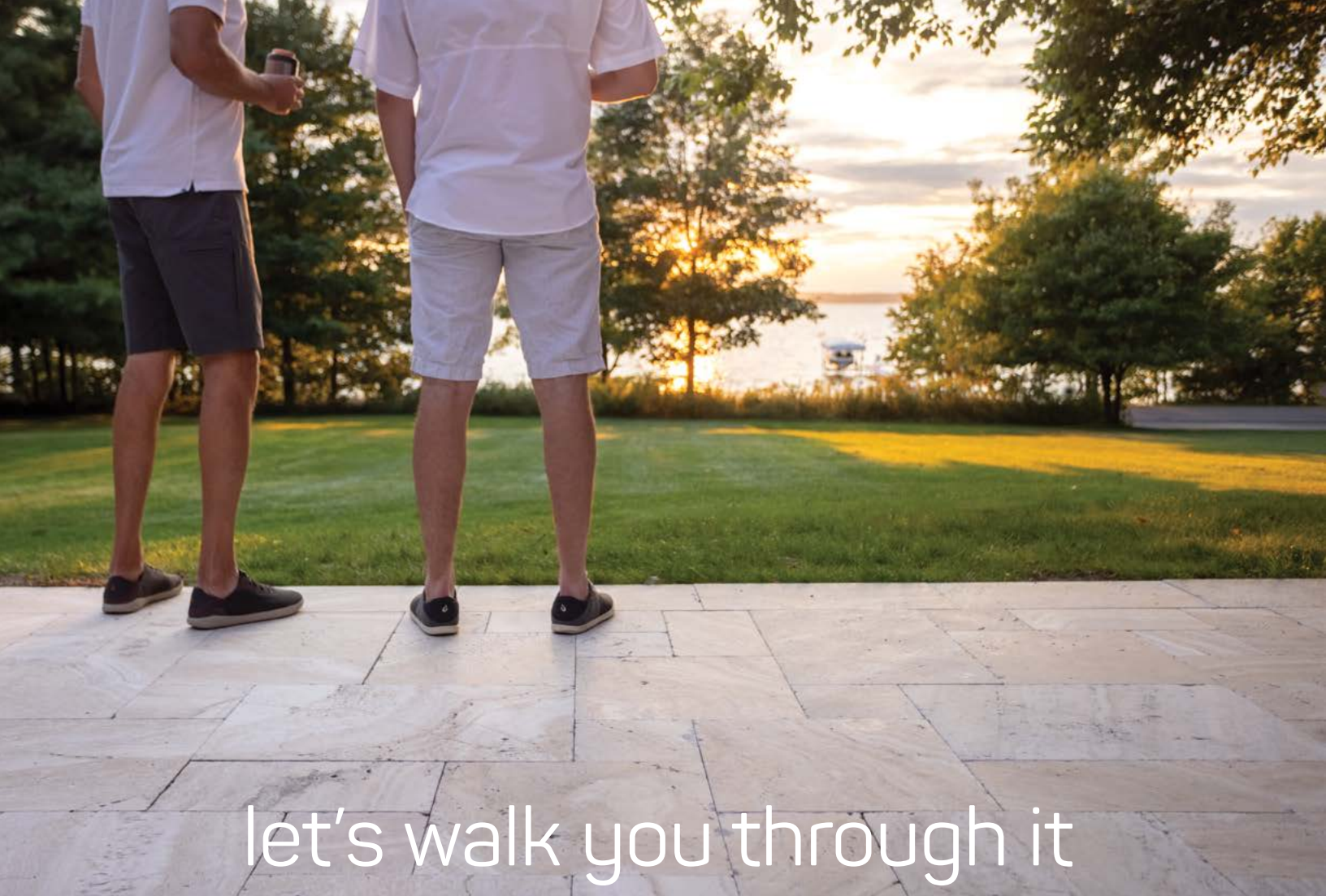


### DREAM DOCK

- Multiple decking options
- Flip N Clip Installation
- Waterless Removal
- Simple Stack Storing
- Additional Stability
- Seamless Design



CONTACT US - 231-582-5020



# a guide to natural stone

**Author: Bob Conklin**  
Product Support & Development, HIGH FORMAT®

From the sun rising over Lake Huron, to its setting across Lake Michigan: it's undeniable that we dwell in one of the most beautiful regions in the entire world. I've had the privilege of living "up north" for most of my life. And I am truly blessed to be here. As Michiganders, we're never more than six miles from the water. We get to revel in all four seasons: from the white snow-blanketed winters, to the promise of new life in the green of spring, to the water sports and extended evenings of summer, and the gorgeous colors on full display in the fall.

Our properties are our own little piece of the north. They tie us to the land. They become our sanctuaries that we mold around the natural beauty that surrounds us. In the midst of our lakeshores, our woodlands and our open fields, we carve the land to

build our homes, and to make our place in the world. It's a manifestation of our vision of our best lives. It's not just your house. It's the place where you bring people to say, "this is who I am."

We're in a renaissance period for outdoor living. Just as the internet has made the world a little smaller by connecting all cultures, the same technologies are giving us access to a diversity of building materials like we've never seen. Materials like natural stone have always been quarried regionally across the world, each with their own unique look and feel. These local resources and vegetation contribute to the distinctive style of each region. But it can also lead to a type of sameness. When you have access to the same handful of materials as everyone else, it becomes difficult to set your property apart.

## Limestone

To provide a local example: in Michigan we have lots of limestone. In fact, the largest limestone quarry in the world is located in Rogers City. Limestone appears in varying shades of gray and buff. It can be extracted in large slabs, which make for gorgeous, rustic looking retaining walls. No doubt, you've seen limestone walls across the landscape, from the Old Mission Peninsula, to Mackinac Island. It's a timeless look, and a big ingredient in our regional flavor. Our limestone is no slouch. And now we can supplement it with the best stone offered across the United States and throughout the world.



Fond du Lac Limestone Steps

**LANDSCAPE LOGIC**  
DESIGN BUILD ENHANCE

*Outdoor Living at its Finest*

(231) 547-3472 LANDSCAPE-LOGIC.COM

MINI  
WINNER  
2012 - 2022

Bluestone

Another timeless look that you’ve certainly seen is bluestone. Bluestone originates from quarries in New York and Pennsylvania. It’s a sedimentary stone, which means that it was originally formed by the settling of mineral deposits. As the name suggests, it’s mostly blue in color. But bluestone can have a wide range of color, from green to blue, to deep lilac and even brown and orange.

Bluestone remains popular for its rich color, irregular shapes, and natural cleft surface. But as is the case with many classic stone materials, modern manufacturing gives us an even bigger diversity of options. In its irregular, natural cleft form, bluestone is wonderful. But if you’re looking for something less rustic, bluestone also comes in a variety of rectilinear shapes and sizes. Ashlar pattern bluestone is a popular choice for patios, walkways, and home entryways. Assorted squares and rectangles fit together in a pattern that appears random to the naked eye.

And if the natural cleft face of bluestone isn’t refined enough, bluestone can be made to have a thermal face. The process of thermalling is where the stone pieces are run through a high-temperature torch. The

intense heat blows the top layer off the face of the stone, leaving a very level and lightly textured finish that has plenty of grip, but is suitable for bare feet.

Like many stone materials, bluestone is available in an entire range of complimentary products. Bluestone comes as flagstone or as a paver for patios and walking surfaces. It is also available as a step tread, which can come irregularly shaped, or cut into consistently dimensioned slabs that are safe for walking and can meet any building code. Bluestone can be sawn into retaining wall materials. And it is a popular choice for accents, like wall copings and column caps.



Full Color Bluestone  
2", 4", 6" Sawn Wall

Marble & Travertine

Another incredible set of materials that have gained a lot of traction throughout the north are imported slabs crafted from marble and travertine. Known throughout the world as a luxurious interior surface, marble has been gaining a lot of attention outdoors for use in show-stopping patios, walkways and home entryways. Marble is a metamorphic stone, which means that throughout the course of history, sedimentary (or igneous) rock was exposed to high levels of heat and pressure, transforming the internal structure of the stone, making it much more dense.

For landscaping, marble is processed into pavers and slabs that are extremely durable, and dimensionally perfect. They take on a smooth appearance, but are actually very slip-resistant. Marble naturally occurs in a wide range of vivid colors, including rich creams, deep blues, whites, grays, browns and reds. Each quarry has its own signature color palette. But even within a single quarry, unique variegation within the stones themselves ensure that no two marble patios will ever look exactly alike. If you’re looking for a patio of distinction that nobody else will have, marble can deliver. And because the stone is so durable, it is very low maintenance.

Marble pavers are available in square and rectangular shapes, ranging from small to massive. But perhaps the most visually stimulating marble paver configuration is the French pattern: a twelve-piece pattern composed of squares and rectangles of four different sizes. The visual result is a harmonious explosion of complimentary colors, with lines that intersect and weave through each other. The eye can get lost in its beauty for hours.

Travertine pavers are similar to marble, and have many of the same properties. Travertine is a dense limestone that hasn’t gone through the metamorphic process to become marble. By comparison, travertine is slightly more porous, contributing to its unique look. And in general, the range of colors and variegation within types of travertine can be much wider than marble. It is available in the same range of shape, sizes and patterns.



Azure Marble in French Pattern

*Creating Personalized  
Outdoor Living Environments*

LANDSCAPE CONSTRUCTION DESIGN/BUILD



**FLASKA**

LANDSCAPING

FlaskaLandscaping.com



Silverek Travertine in French Pattern

Even though most marble and travertine is imported from abroad, it is incredible how well the materials blend into the natural aesthetic of Northern Michigan. An excellent example is our featured project, found on page 23. This incredible Lake Michigan home features HIGH FORMAT® Devon travertine pavers and Fond du Lac limestone slabs. It's a beautiful example of how seamlessly the bold colors and rectilinear shapes of the travertine meld with the natural irregularities and neutral tones of the Fond du Lac and the surrounding environment.

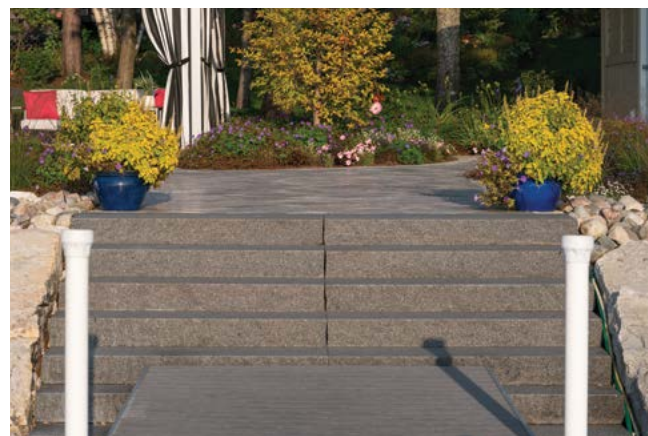
#### Granite

As the rising profile of marble has shown, high-end stone materials from inside the home are getting some major love outside of the home. Another surface you may have in your house that is making a splash in the yard is granite. Granite is an igneous stone, which means that it is formed by the cooling of lava. It is dense, with a complex grain structure that gives each piece its signature sparkling appearance. It can take on a large range of colors, depending on where it's sourced. But for exterior use, we often see granite that has a relatively consistent color range, be it dark gray to black, or deep blue with veins of beige and salmon.

Granite is an excellent material for walls and step treads. It comes sawn to specific thicknesses, and can have that same sawn look on the face. Or it can have a more natural-looking split-face, where the stone is literally split apart, revealing the natural edge. Granite steps are a great choice in spaces where a super-consistent tread is required. And due to its generally linear look and consistent color, granite is a great choice for modern styling.

It can be exhilarating to explore the great diversity of color and texture that stone can bring to our homes. Another sandbox that we get to play in is shape. For many years, Northern Michigan has experienced a broadly rustic style of landscape design. This has been characterized by the use of irregularly-shaped stone, sweeping curved lines, natural cleft textures, and lots of boulders. Many of these aesthetics were born from the materials that were available locally, like those awesome limestone slabs that have been such an important regional resource.

Landscape designers and homeowners have continually found ways to breathe new creative life into our local palette of colors, shapes and sizes. But today, we're not constrained to the handful of choices that were available to us even just a few years ago. One result of this new influx of materials is that we're beginning to see more modern aesthetics bleeding into the local flavor. These styles are characterized by the use of long straight lines, materials that are sawn to size, and color palettes that are consistent and neutral, often showing contrast between the main details like walls and patios, and the finish details like copings and column caps.



Granite Steps

#### Quartz

The creativity we're seeing today is boundless. There are no hard rules. Many designs are sticking to a tried-and-true rustic aesthetics. Some are bringing in an exciting modern influence. And others are finding creative ways to blend styles in stunning ways. For example, you could take a modern looking wall material like granite, with its consistent dark colors, its long linear styling, and its subtle textures; and you could combine that with a more traditional patio material, like Gold or Silver Quartz, with its irregular shapes, natural cleft textures, and creamy white colors. The materials compliment each other, while contrasting in a way that's visually engaging.

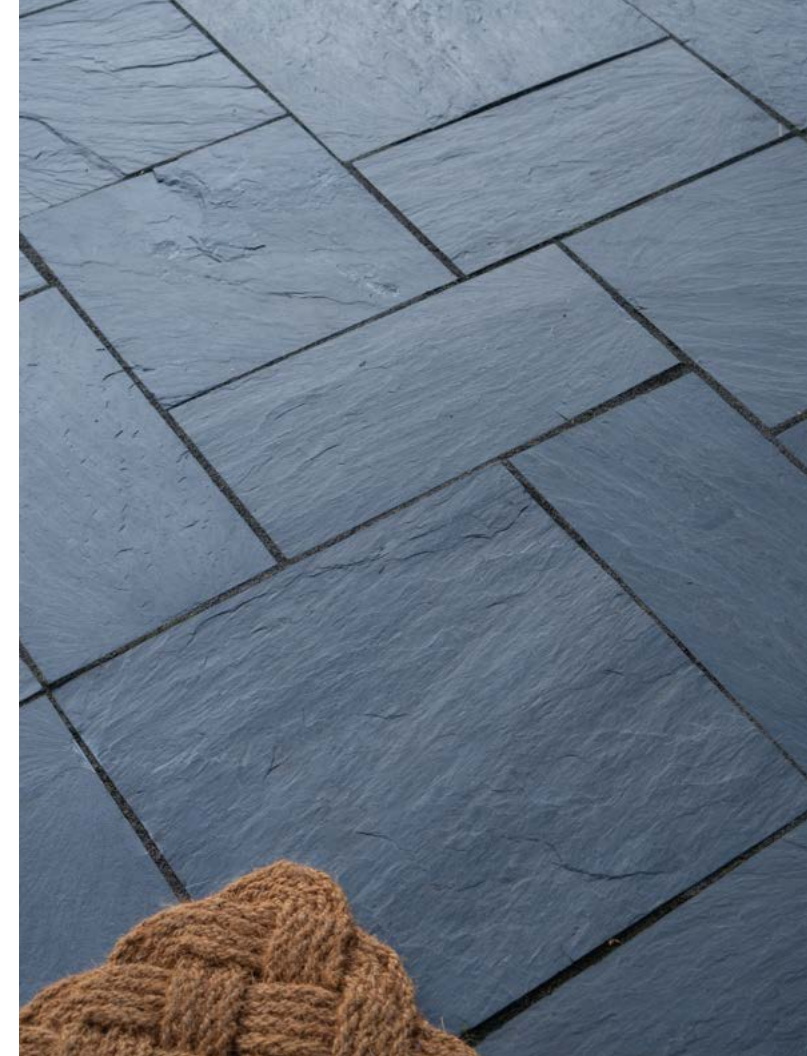
Silver Quartz belongs to the quartzite family, which is another metamorphic stone, composed of quartz sandstone. It is a very dense, often shimmery material that typically comes in the form of flagstone, irregular step treads, and decorative outcroppings. It is often used in a patio as an alternative to bluestone or limestone options like Chilton or Fond du Lac. The luster of Silver Quartz, and its variant, Gold Quartz, are enhanced by auburn ribbons, and gleaming flakes of silver or gold, that glitter and glisten as the sunlight illuminates the surface at various angles throughout the daytime hours.



Silver Quartz Thin Flagstone

#### Slate

There are so many types of stone in all shapes and sizes, colors, textures and styles. Listing them all would be an exercise in futility. But one final type of stone I want to highlight is slate. Slate is a metamorphic stone that is special because of its versatility and its ability to transcend styles. It's found in a range of dark hues. But the highest quality domestic slate is pitch black. That makes it an incredible choice for modern styling or general accents.



Midnight Patterned Slate

In design, slate refuses to be pigeonholed. Like bluestone, slate can come in both irregular flagstone, and pattern flagstone. The gorgeous natural cleft and singular dark color makes slate equally comfortable in modern or rustic landscapes. But slate can also be honed to a smooth modern surface for use in step treads, copings and column caps. In addition to flagstones and treads, slate can be found in boulders and outcroppings that can be blended into any landscape design.

It's really a fantastic time to be a property owner in Northern Michigan. The beauty and wonder of the natural landscape draws us here; and it continues to rapture us throughout time. We get the privilege of taking our little pieces of the north, and crafting them into reflections of how we see ourselves. Never in history has there been more opportunity to transform your landscape into the uncompromised vision that has never strayed far from the front of your mind. This is your piece of the north. What will you choose to make of it?

SET A TONE

natural stone color options



Sahara Travertine  
Antiqued Finish

Sterling Travertine  
Antiqued Finish

Silverek Travertine  
Antiqued Finish

Devon Travertine  
Antiqued Finish

Fossil Travertine  
Antiqued Finish

Basalt  
Leathered Finish

Azure Marble  
Antiqued Finish

Azure Marble  
Sandblasted Finish

Tuscany Marble  
Sandblasted Finish

Tuscany Marble  
Antiqued Finish



Travertine, marble and basalt are available in a variety of precision cut paver sizes along with complimentary coping. Caps with straight and/or split-face edges are also available in both Tuscany and Silverek Travertine with an Antiqued finish.

Stocking levels change daily. Call us for up to date inventory for specific colors.

Please note that natural stone will vary in color tones from piece to piece. Our fully stocked yard is available for you to come make your selections, and procure your materials of choice.

Flagstone	Stepping Stones	Walls	Boulders	Outcropping	Steps	Coping/Caps/Treads	
•	•		•	•		•	Midnight Slate
•		•			•		Onyx Granite
		•			•		Carbon Granite
•	•	•					Laramie Gray
•		•			•		Full Color Bluestone
		•			•		Onaway Gray
•		•		•	•		Laramie Brown
•		•		•	•		Chilton
•					•		Muskoka Granite
				•	•		Northport
		•			•	•	Full Color Limestone
					•		Bay Port Limestone
•		•			•		Arcadia Limestone
•		•			•		Fond du Lac Silver
		•			•		Onaway Buff
				•	•		Fond du Lac
			•				Fieldstone
•							White Quartz
•							Silver Quartz
•			•				Gold Quartz
•							Charcoal Quartz

natural stone color options



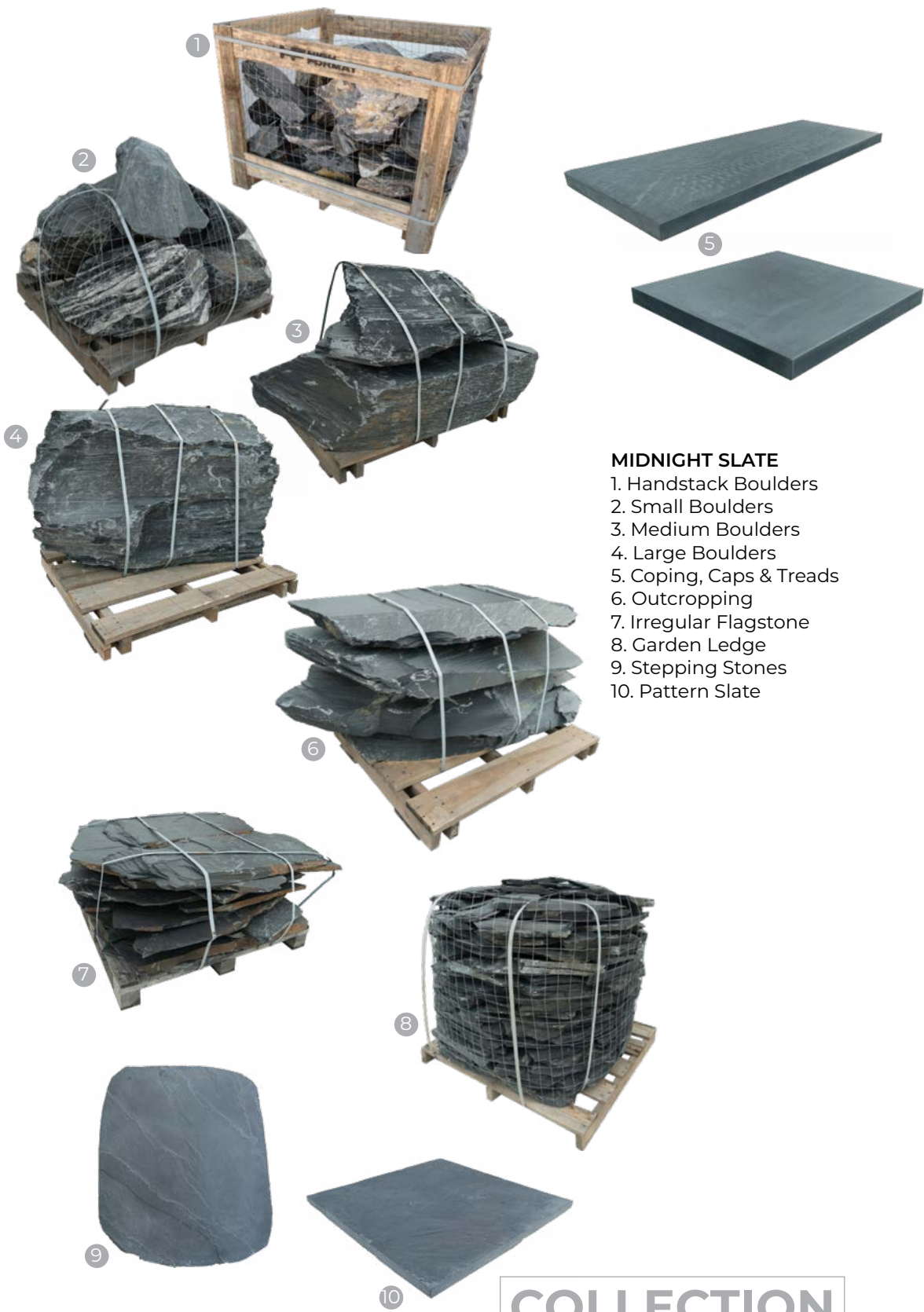
# our picks natural stone



- FULL COLOR BLUESTONE**  
 1. Stand Up Thermal Flagstone  
 2. Stand Up Natural Cleft Flagstone  
 3. Quarry Run Steps  
 4. Rockfaced Thermal Step  
 5. Live Edge Thermal Step  
 6. 6" Sawn Wall  
 7. 2", 4", 6" Sawn Wall  
 8. 24"x36" Natural Cleft Flagstone



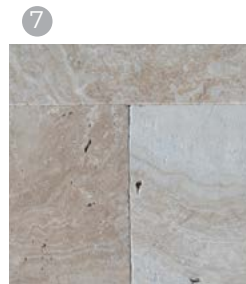
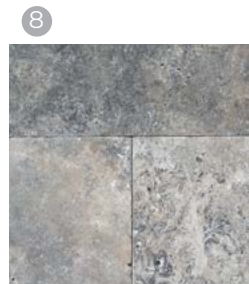
COLLECTION



- MIDNIGHT SLATE**  
 1. Handstack Boulders  
 2. Small Boulders  
 3. Medium Boulders  
 4. Large Boulders  
 5. Coping, Caps & Treads  
 6. Outcropping  
 7. Irregular Flagstone  
 8. Garden Ledge  
 9. Stepping Stones  
 10. Pattern Slate

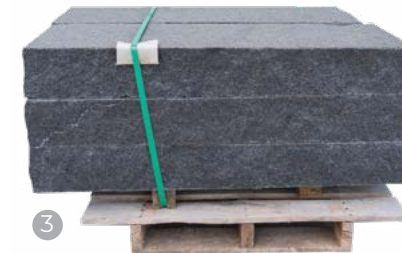
COLLECTION

## our picks slabs & pavers



1. Fond du Lac Silver Stand Up Flagstone
2. Gold Quartz Stand Up Flagstone
3. Charcoal Quartz Stand Up Flagstone
4. Select Bluestone Thermal Pattern Flagstone
5. Huron Gray Flamed Pattern Pavers
6. Laramie Gray Large Oversize Pieces
7. Sahara Travertine
8. Silverek Travertine
9. Azure Marble

## our picks steps & stones



1. Chilton Outcropping
2. Fond du Lac Irregular Steps
3. Onyx Granite Splitface Steps
4. Northport Guillotined Wall
5. Laramie Brown Ledgerstone
6. Onyx Granite 4" Splitface Wall
7. Onaway Gray 6" Sawn Wall
8. Huron Gray 3" and 6" Sawn Wall



1

## our picks fire features

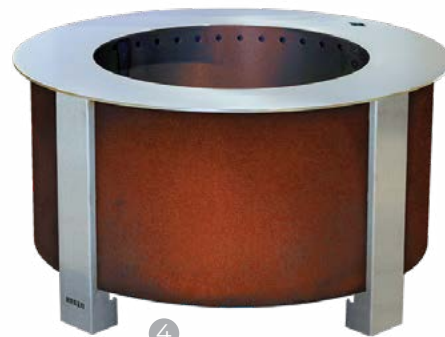
1. Firegear Sanctuary Fire Bowl in 39" or 29" diameter
2. Unilock® Sunset Fire Pit Kit
3. Breeo® Smokeless Fire Pit in Stainless Steel, multiple size options
4. Breeo® Smokeless Fire Pit in Corden Steel, multiple size options
5. Breeo® Outpost Grill attachment
6. HIGH FORMAT Belvedere® Fire Pit Kit with Breeo® Smokeless Insert



2



3



4



5

ROUND



6



1



2

1. HIGH FORMAT® Dimensional Fire Pit with Gas Conversion Kit
2. Firegear Sanctuary Fire Table available in two size options
3. Add a Breeo® Smokeless Fire Pit Liner to a square fire pit
4. HIGH FORMAT Kodah® Fire Pit Kit with Standard Black Steel Liner



3

LINEAR



4



*Now accepting owners for 2023*

**Maximize your rental income and minimize your stress.**

Join our premier vacation rental management program.



**Boyneland**  
Vacation Rentals

[lindsay@boyneland.com](mailto:lindsay@boyneland.com)

616-366-8441



## PREMIUM BULK MULCH

- 100% natural hardwood
- No filler
- Easy to spread
- Excellent coverage rate



Midnight  
Brown



Dark  
Brown



Natural



**CLARK  
HOFFMAN**  
LANDSCAPING

DESIGN • INSTALL • MAINTAIN

Where natural beauty  
meets timeless design

[HOFFMANLANDSCAPING.COM](http://HOFFMANLANDSCAPING.COM) • (231) 347-0630



**STONE YARD & DESIGN SHOWROOM**

16188 Heise Rd, Charlevoix, MI 49720  
231-547-6595  
sales@mantheisupply.com

**YOUR SOURCE FOR LANDSCAPE PRODUCTS IN NORTHERN MICHIGAN**